

PARTS CATALOG



Table of Contents

AutoFil Parts1

Pneumatic Tire Pump Parts9

**Pathway Polymers
2003 Curtain Pole Road
Chattanooga, TN 37406
800.251.7642
www.pathwaypolymers.com**

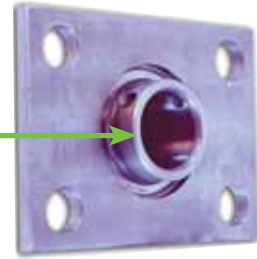
Parts listed in this catalog are the most commonly ordered. If you need a part that you don't see listed in this catalog, please contact your Region Manager or Pathway Polymers.

AutoFil Parts



Pathway Polymers Parts Catalog

Part Name: AutoFil Timken Fafnir Ball Bearing
Part #: BRG006



Part Name: AutoFil Bearing Cage
Part #: BRG007
Description: Bearing Cage 0022-00480 Rev. B 1 piece



Part Name: AutoFil Injector Barrel 1 piece
Part #: BRL002
Description: 002-074



Part Name: AutoFil Small Tire Plug
Part #: Bullet001
Description: Fits 1/8" needles



Part Name: AutoFil Large Tire Plug
Part #: Bullet002
Description: Fits 1/4" needles



Part Name: AutoFil Grinder Hopper Cover
Part #: COV001
Description: 002-013

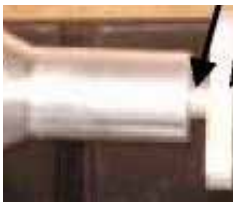




Part Name: AutoFil Fill Gun Adapter
Part #: FILADA002
Description: Big Bore, 220 valve



Part Name: AutoFil P-C Design Fill Gun
Part #: FILLGUN01



Part Name: AutoFil Fill Gun Plunger
Part #: FILLGUNPLUN02



Part Name:
Part #: FILLGUNPLUNHOU01
Description: Plunger Housing



Part Name: AutoFil Fluffer Bar 002-0080
Part #: FLUFBAR



Part Name: AutoFil 200 PSI Gauge
Part #: GAU001

Pathway Polymers Parts Catalog

Part Name: AutoFil Guage 3000 PSI
Part #: GAU002



Part Name: Fill Gun Gauge assembly w/ New PB2-L Valve
Part #: GAUASMB03



Part Name: AutoFil Diaphragm Seal for Pressure Gauge
Part #: GAUSEAL01



Part Name: AutoFil Grinder Hopper 002-0012
Part #: HOP001



Part Name: 1 inch Vinyl Hose, Braid Reinforced
Part #: HOSVINYL001



Part Name: 3/8 ID x 1/2" OD Vinyl A/B Hose
Part #: HOSVINYL002





Part Name: AutoFil Small Diameter Needle
Part #: NEEDLE01



Part Name: AutoFil Large Diameter Needle
Part #: NEEDLE02
Description: 4 inches long



Part Name: AutoFil Large Diameter Needle
Part #: NEEDLE03
Description: 6 inches long



Part Name: AutoFil Large Diameter Needle
Part #: NEEDLE04
Description: 8 inches long



Part Name: O/I IO-1224 Interface
Part #: PLCOPI001



Part Name: AutoFil Tamden Pump
Part #: PUMTAM001

Pathway Polymers Parts Catalog

Part Name: Pipe Bushing
Part #: PIPBUS011
Description: 1 1/4" x 3/4"

Part Name: Pipe Nipple
Part #: PIPNIP006
Description: 3/4 inch

Part Name: Pipe Bushing
Part #: PIPBUS001
Description: 1 1/4" x 1 inch Black

Part Name: Valve Ball
Part #: VAL005
Description: 3/4" 600 WOG



Part Name: AutoFil Injector Screw 002-0075
Part #: ROTINJ002



Part Name: AutoFil Screen Plate 02-0085
Part #: SCRPLT001
Description: Screen Plate 1 piece





Part Name: Bearing Spacer Set
Part #: SPACERS001



Part Name: Stator Injector 9002-0059
Part #: STA001
Description: 16 pieces



Part Name: Static Mixer Elements
Part #: STAMIX001



Part Name: Tube 1/2" x 8"
Part #: STAMIXAS001
Description: A/B Mixer Tube



Part Name: AutoFil Torque Hub 26:1
Part #: TORHUB001



Part Name: AutoFil Brass Check Valve
Part #: VAL003
Description: 1/4" NPT 1 piece

Pathway Polymers Parts Catalog

Part Name: AutoFil 1/2" All Thread

Part #: ALL001

Description: 4 pieces



Part Name: AutoFil Coupling Insert

Part #: COUINS002

Description: L/AL100



Part Name: AutoFil 2" FPT x MEMO 2" OD Plastic

Part #: COUHOS006



Pneumatic Tire Pump Parts



Pathway Polymers Parts Catalog

Part Name: 3/4" Plastic Element
Part #: 1001



Part Name: Flush-free Mixing Block Complete Assembly
Part #: 1043 A



Part Name: Safety Handle (flush free)
Part #: 1052



Part Name: FP-134 Large Core Remover
Part #: 8448



Part Name: FP-146 Teflon Washer
Part #: 8481

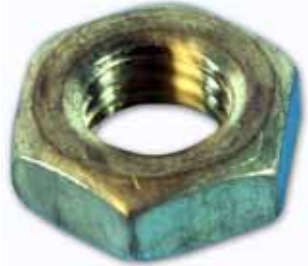


Part Name: FP-153 Collet Adapter
Part #: 8485





Part Name: FP-154 Stem and Collet
Part #: 8486



Part Name: FP-145 Lock Nut
Part #: 8487



Part Name: FP-144 Hand Wheel
Part #: 8488



Part Name: FP-143 O-Ring
Part #: 8489



Part Name: FP-142 Stem Sealing Nut
Part #: 8490



Part Name: FP-141 Adapter Body
Part #: 8491

Pathway Polymers Parts Catalog

Part Name: PF-140 Stem ILet

Part #: 8492



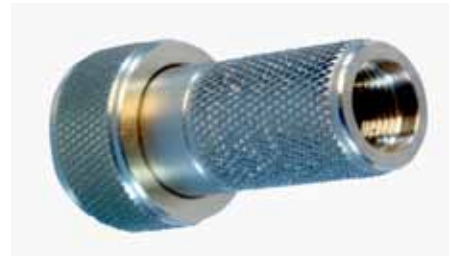
Part Name: FP-139 Gasket

Part #: 8493



Part Name: FP-138 Ejector Union Steel

Part #: 8494



Part Name: Ejector Union Brass

Part #: 8498



Part Name: 310 Calcium Gun/Valve Adapter

Part #: 8499



Part Name: 0-160 PSI guage back mount 7200

Part #: 9800





Part Name: Plastic Bowl Reg1
Part #: 9901
Description:



Part Name: 1/2" Kamlock Gasket
Part #: 11502



Part Name: 1/2" Clear Vinyl Hose
Part #: 11700



Part Name: 1/2" x 120" hose
Part #: 11705



Part Name: 1 1/2" part f male npt x male kamlock
Part #: 11900
Description:



Part Name: 1/4" male quick connector
Part #: 16000

Pathway Polymers Parts Catalog

Part Name: Valve stem adapter
Part #: 16701



Part Name: 1/2" straight through coupler
Part #: 16702



Part Name: O-ring for quick disconnect coupler
Part #: 16705



Part Name: 3 inch SafeFil Needle
Part #: 18000
Description:



Part Name: 12 ga x 3 inch Hypo Needles
Part #: 18001



Part Name: 14 ga x 2 inch Hypo Needles
Part #: 18002





Part Name: 12 ga x 2 inch Hypo Needles
Part #: 18003



Part Name: 600 PSI guage bottom mount
Part #: 18300
Description: Pump A & B side needed



Part Name: 1000 PSI guage bottom mount
Part #: 18302
Description: Pressure Gauge for Graco Pump



Part Name: 300 PSI guage bottom mount
Part #: 18305
Description: Gun/Flush free block

Part Name: Push Button Pressure Check Assembly
Part #: 18307



Part Name: Control Valve Assembly
Part #: 38310

Pathway Polymers Parts Catalog

Part Name: Counter Cover Tube

Part #: 38313

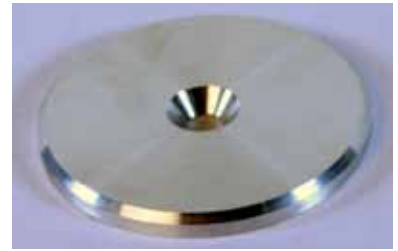
Description:



Part Name: Counter Cover Plate

Part #: 38314

Description:



Part Name: O-Ring retainer for control valve

Part #: 38398



Part Name: Control Valve Housing

Part #: 38421



Part Name: Plunger

Part #: 38422



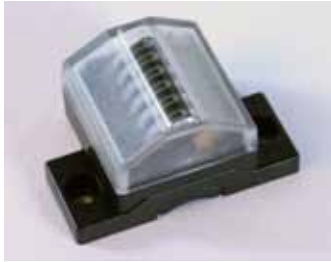
Part Name: Spring for Control Valve

Part #: 38501





Part Name: 1/4" male x 1/8" male reducer
Part #: 38546



Part Name: 7200 Mag Counter
Part #: 38568



Part Name: 7200 Oil Reservoir
Part #: 38584



Part Name: 1/2 inch Ball Valve
Part #: 38778



Part Name: Lower Cylinder Kit
Part #: 38801
Description: 207-580



Part Name: Air Motor Kit
Part #: 38802
Description: 207-385

Pathway Polymers Parts Catalog

Part Name: Displacement Rod
Part #: 38804



Part Name: Cylinder
Part #: 38805



Part Name: Stroke Counter
Part #: 38823



Part Name: Air Regulator
Part #: 38843



Part Name: Connecting Rod
Part #: 38846



Part Name: Air Motor Trip Rod
Part #: 38875





Part Name: 1/2" x 12" hose (flush free)
Part #: 38880



Part Name: 18 inch Stat Mixing Tube
Part #: 38885



Part Name: Flush Free Mixing System Complete
Part #: 40405



Part Name: Mixing Tube and Mixers
Part #: 40406



Part Name: Flush Free A part
Part #: 40407



Part Name: Tote Vent Assembly
Part #: 41700

Pathway Polymers Parts Catalog

Part Name: Seal Kit
Part #: 48409-B



Part Name: Intake Hose Assembly
Part #: 48412



Part Name: 2" x 2 1/2" Bell Reducer
Part #: 50901



Part Name: Vacuum Relief Valve
Part #: 98804





Pathway Polymers
2003 Curtain Pole Road
Chattanooga, TN 37406
800.251.7642
www.pathwaypolymers.com